



Collaborate!

Population Video



POPULATIONS

CONCENTRATIONS



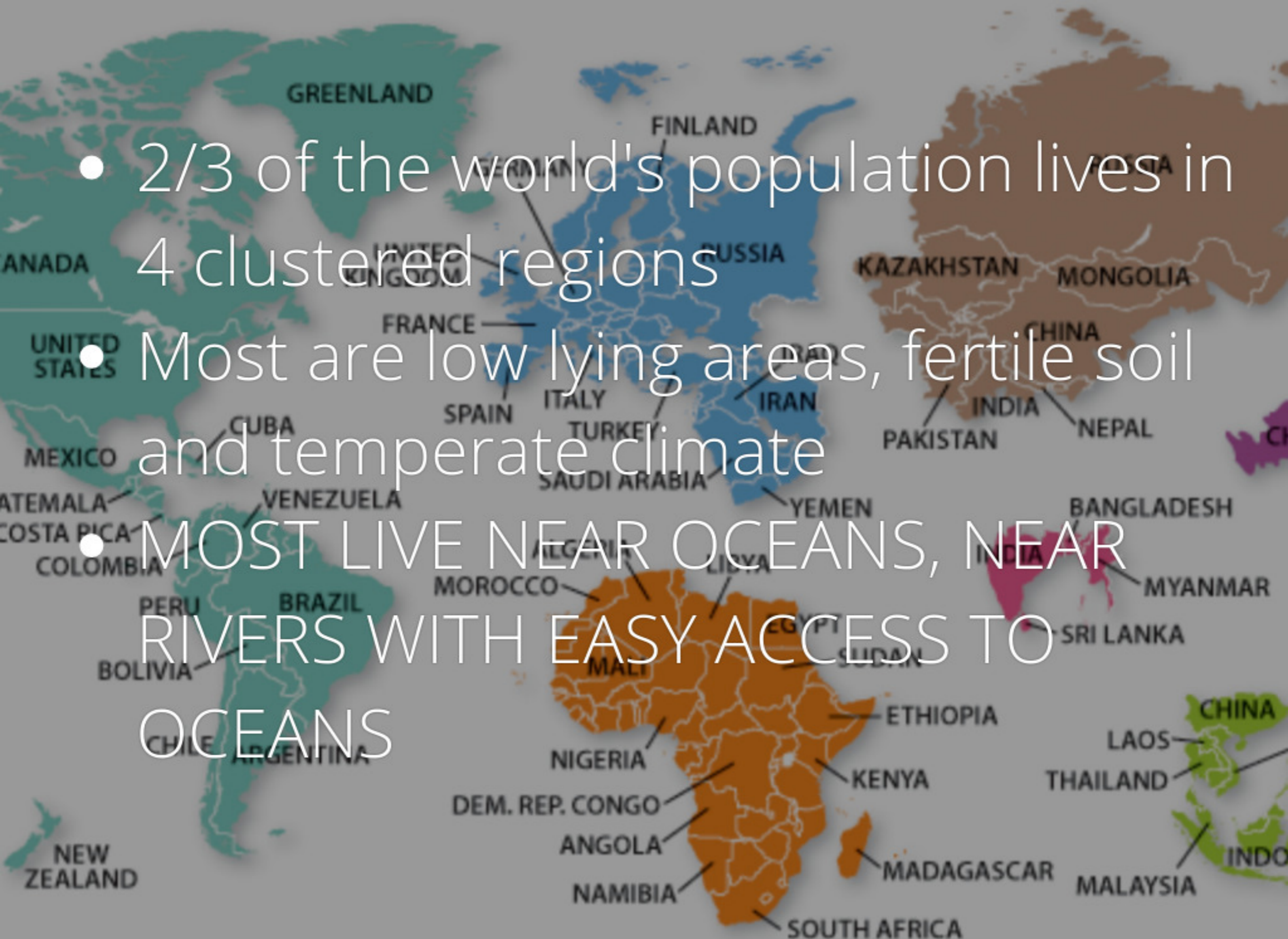
Objectives / Essential Question

1. Why do some regions have clustered populations?
2. Why are some region sparsely inhabited?

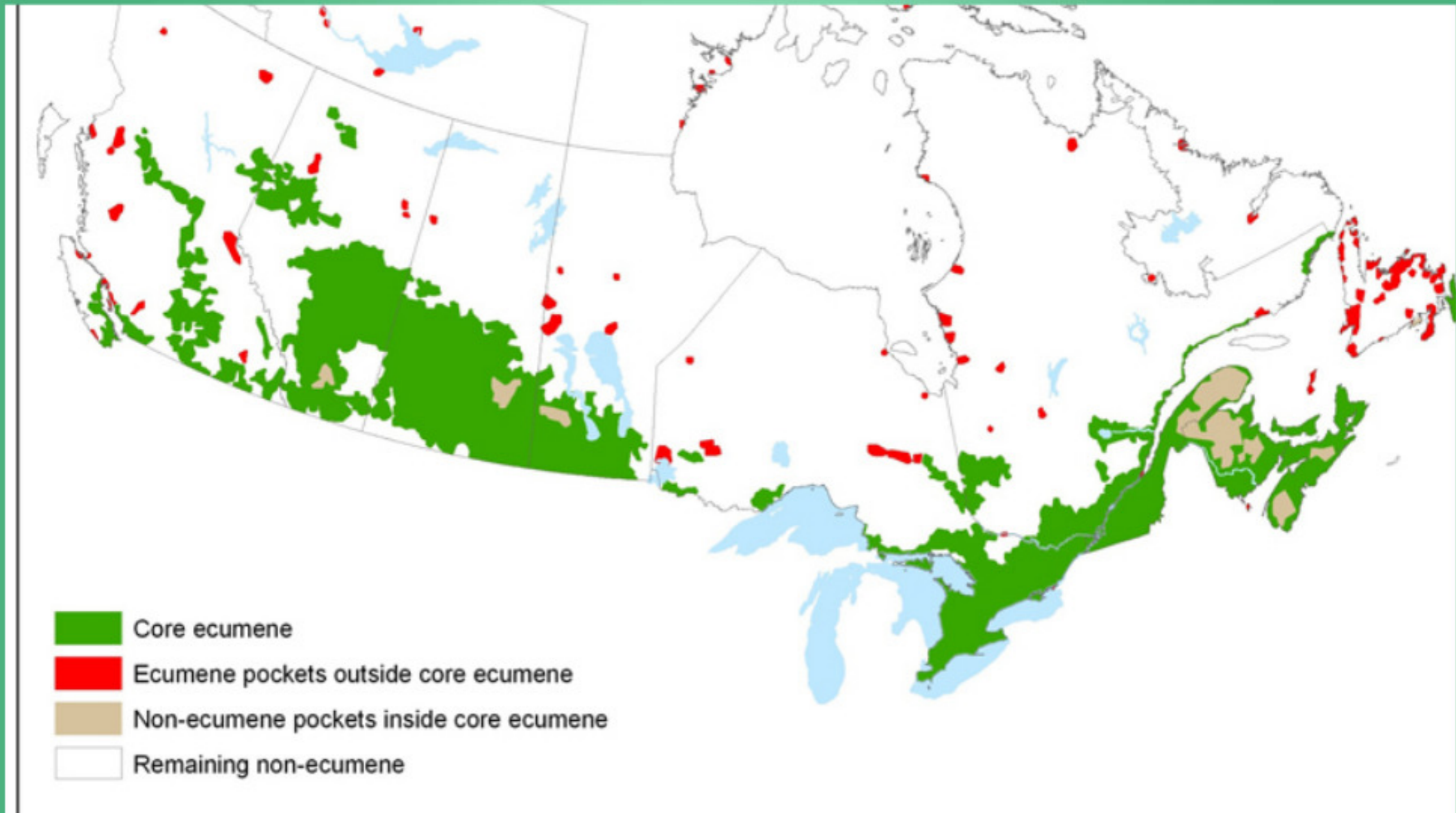
- 2/3 of the world's population lives in 4 clustered regions

- Most are low lying areas, fertile soil and temperate climate

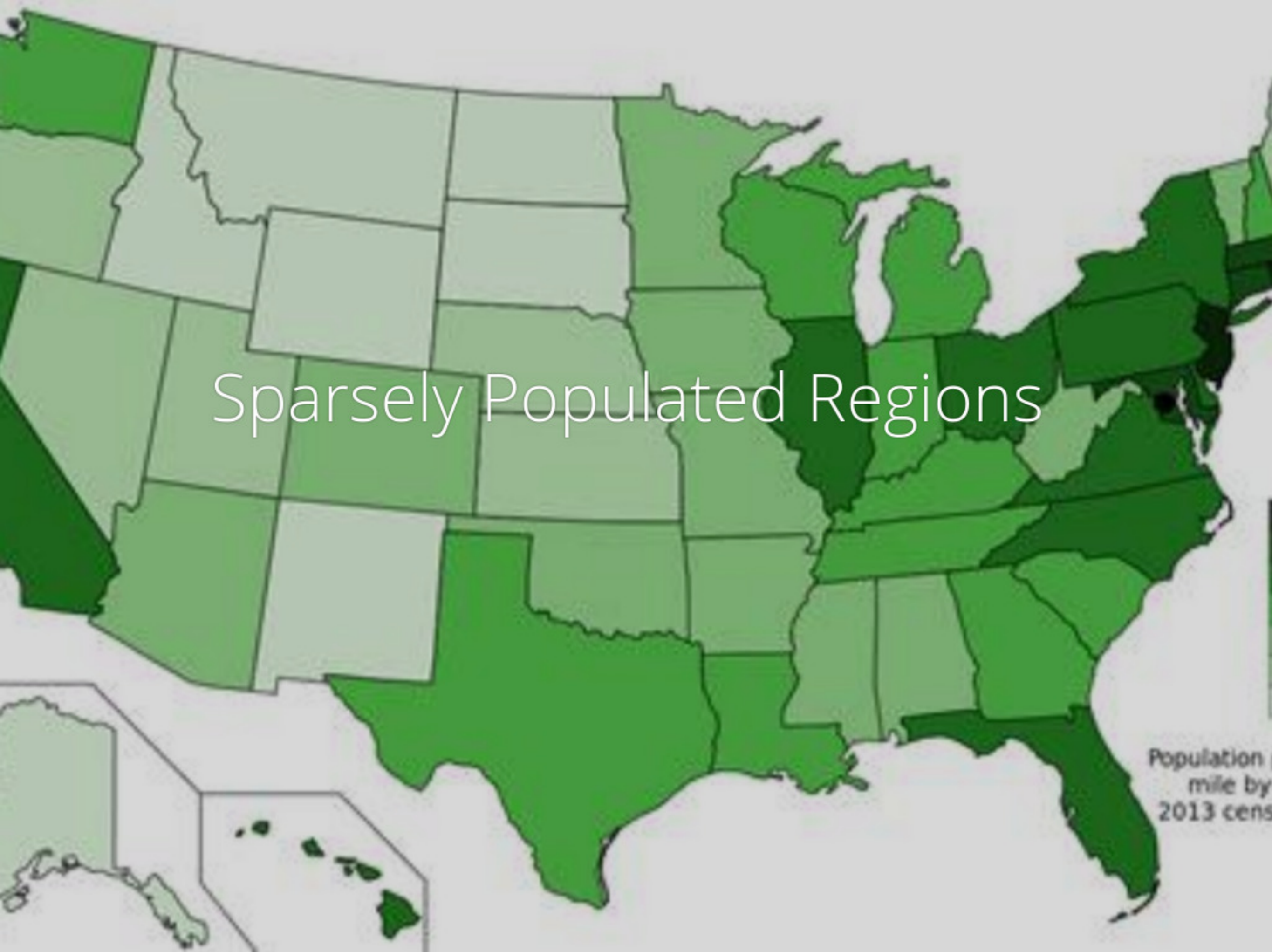
- MOST LIVE NEAR OCEANS, NEAR RIVERS WITH EASY ACCESS TO OCEANS



Ecumene- the portion of Earth's surface occupied by permanent human settlement



Sparsely Populated Regions



Cold Lands

- Land near North and South poles
- Perpetually covered with ice (permafrost)
- Polar regions are not suitable for agriculture
- Few animals can survive
- Few humans live there



Dry lands



- 20% of the Earth's surface
- Too Dry for Farming
- Lacks water to grow crops to feed a large population
- Some people raise animals (camels)
- Contain Natural resources- petroleum

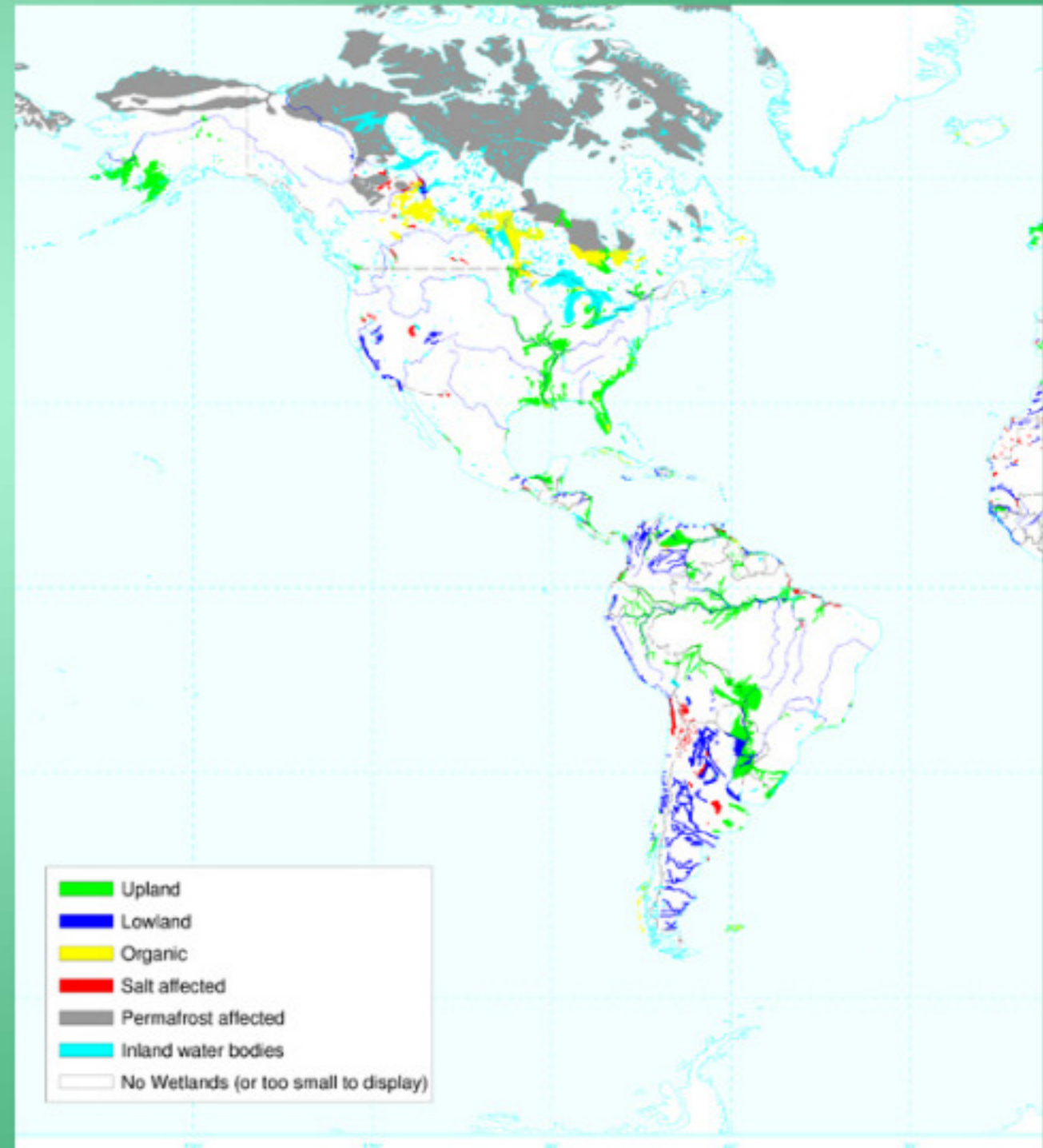
High Lands



- Highest mountains in the world - sparsely populated
- Some high altitude plateaus and mountain areas are densely populated
- Mainly low latitudes (near equator) where agriculture is possible

Wet Lands

- High Levels of precipitation
- Located near the Equator
- Inhospitable
- Rain and heat deplete nutrients from soil
- Not good for agriculture





Quiz

World Population Regions

2/3 of the World's population lives in _____ regions.

4

3

5

What is the definition of Ecumene?

- The portions of Earth where people don't desire to live
- The portions of Earth where people desire to live
- The portions of Earth occupied by human settlement

Which of the following is a reason why some land areas are not part of the ecumene?

- The land is a dessert and dry
- The land is covered in ice or permafrost
- The altitude is too high and the mountains are steep
- The climate has high level of precipitation and the climate is too hot
- All of the above